

TB-41

MINI ROUND BEAM LOAD CELL



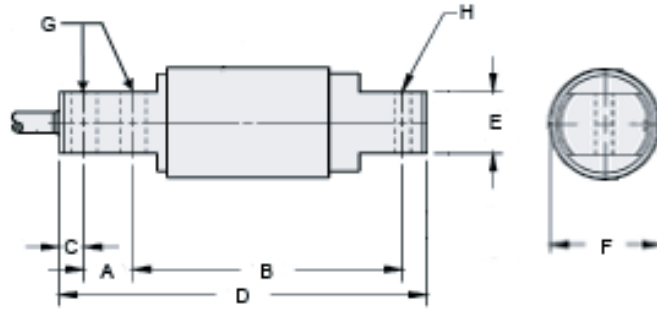
TOTALCOMP
Model TB-41

Single ended miniature round beam load cell. Ideal for low-capacity platforms and bench scales

- ✓ *25 to 500 lbs. capacities*
- ✓ *Built-in protective shield.*
- ✓ *Low profile.*
- ✓ *Stainless Steel.*
- ✓ *Meets NIST H-44 requirements.*
- ✓ *Heavy duty construction eliminates neoprene sleeve.*



Totalcomp[®] Scales & Components



Model TB-41

TB-41 MINI ROUND BEAM LOAD CELL

This load cell features exclusive heavy duty, stainless steel construction, eliminating the need for neoprene boot. The TB-41 is thoroughly potted, has a special protective metal shield over the strain gage area and meets NIST H-44 requirements. Interchangeable with Sensortronics Model 60040.

| Part Number | Capacity | Weight | A | B | C | D | E | F | G | H |
|-------------|----------|--------|------|------|------|------|------|------|------|------|
| TB41-25 | 25 lb | 1 lb | 0.50 | 1.81 | 0.25 | 2.81 | 0.62 | 1.30 | 0.26 | 0.26 |
| TB41-50 | 50 lb | 1 lb | 0.50 | 1.81 | 0.25 | 2.81 | 0.62 | 1.30 | 0.26 | 0.26 |
| TB41-75 | 75 lb | 1 lb | 0.50 | 1.81 | 0.25 | 2.81 | 0.62 | 1.30 | 0.26 | 0.26 |
| TB41-100 | 100 lb | 1 lb | 0.50 | 1.81 | 0.25 | 2.81 | 0.62 | 1.30 | 0.26 | 0.26 |
| TB41-150 | 150 lb | 1 lb | 0.50 | 1.81 | 0.25 | 2.81 | 0.62 | 1.30 | 0.26 | 0.26 |
| TB41-250 | 250 lb | 1 lb | 0.50 | 1.81 | 0.25 | 2.81 | 0.62 | 1.30 | 0.26 | 0.26 |
| TB41-500 | 500 lb | 1 lb | 0.50 | 1.81 | 0.25 | 2.81 | 0.62 | 1.30 | 0.26 | 0.26 |

Rated Output
3 mv/v +0.1%

Nonlinearity
+0.3%

Non-Repeatability
0.01%

Operating Temperature Range
0° F to +150° F

Recommended Excitation
10 volts DC

Maximum Excitation
15 volts DC

Zero Balance
+1.0%

Bridge Resistance
350 Ohms nominal

Safe Overload
150% of rated capacity

Cable Color Code
+ Excitation.....Red
- Excitation.....Black
+ Output.....Green
- Output.....White
Shield.....Bare

TOTALCOMP LIMITED WARRANTY

Totalcomp warrants this product to be free of defects in materials and/or workmanship and suitable for the purpose(s) intended as outlined on this sheet. This warranty is effective and shall cover the purchaser for one year from the date of shipment from our plant. If this product is found to be defective by our inspection in accordance with the above listed criteria, we will replace or repair it at our expense. For warranty service, please obtain a return authorization number from us and return the item, shipping prepaid, with a written description of the problem. We will respond promptly with the results of our evaluation.



Totalcomp[®]

Scales & Components